

LS-16T



100-200 hp.

Sullair LS-16T Series Air Compressors

Two-stage, high pressure performance. Sullair dependability.

Compressor unit

Two-stage, flood lubricated and cooled, asymmetrical lobe, rotary screw type.
Axially ported inlet.
Tapered roller bearings for high load carrying capacity

Motor

460V standard NEMA TSD frame, D-flange Class B insulation, open drip-proof, squirrel cage induction type.

Starter – Magnetic full voltage

Starter is standard on this series. Consult factory for other various combinations offered.

Coupling

Motor couples to compressor unit through long-life non-lubricated, flexible coupling.
Motor is flange mounted to compressor, and mounted on heavy steel unitized sub-base for positive alignment.

Inlet air filter

Dry type with differential pressure indicator.
Oversized for long life.
Cleanable and easily replaced.

Air fluid separation

ASME 400 PSIG rated tank with ASME pressure relief valve.
Exclusive fluid filler to prevent over filling.
Fluid level sight glass.
Air/fluid separator element.
Combination minimum pressure and discharge check valve.
Pneumatic blowdown valve.

Cooling/Lubrication system

Fluid removes heat of compression from compressor unit and is circulated by air pressure differential (no pump required) through air-cooled or water-cooled heat exchanger and filter.

Equipment includes mounted and piped air-cooled aftercooler with 1800 RPM fan updraft discharge; or water-cooled aftercooler with water through the tubes, air in shell.
Complete with moisture separator and condensate traps.
The lubrication system consists of full-flow main strainer and bearing fluid filter, fluid thermal bypass valve; water flow control on water-cooled machines.

Control

Capacity modulation range from 100 to 40 percent.
Operating pressure can be set from 225 to full load PSIG with Sullimatic control.
Inlet butterfly valve is controlled by a diaphragm and a pressure regulator holding constant pressure.
Below 40 percent air demand, machine will unload by use of a pressure switch and a pneumatic blowdown valve, reducing receiver pressure and minimizing no-load power consumption.

Protective devices

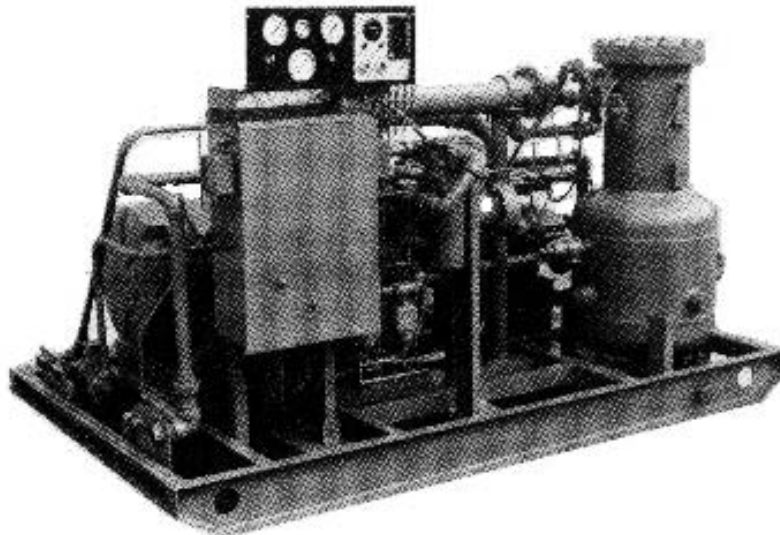
Thermistor-type high pressure discharge temperature switch with triple probes at compressor inter-stage and receiver.
Switches for
High discharge pressure.
Motor overload.
Low water pressure (on water-cooled models).
Fan motor overload (on air-cooled models).

Control panel

Air receiver and line pressure gauges.
Compressor discharge temperature gauge.
Hourmeter.
Start/stop switches.
Differential pressure indicator for air filter, fluid filter and separator.

General

Optional heavy gauge steel sound attenuating enclosure with removable panels.
No special foundation required.



Sullair LS-16T Series Air Compressors.

Specifications

| Model | 250/250 | 250/350 | 360/250 | 360/350 | 425/250 | 425/350 |
|-------------------------------------------------------------|---------|---------|---------|---------|---------|---------|
| Compressor Performance | | | | | | |
| Capacity (acfm) | 250 | 250 | 360 | 360 | 425 | 425 |
| Full Load Pressure (psig) | 250 | 350 | 250 | 350 | 250 | 350 |
| Motor (hp) | 100 | 125 | 125 | 150 | 150 | 200 |
| Dimensions and Weight, Air-Cooled, Without Enclosure | | | | | | |
| Length (in) | 112 | 112 | 112 | 112 | 112 | 112 |
| Width (in) | 62 | 62 | 62 | 62 | 62 | 62 |
| Height (in) | 68 | 68 | 68 | 68 | 68 | 68 |
| Weight (lb) | 6200 | 6200 | 6500 | 6500 | 6500 | 6650 |

- = Standard
- = Option
- NA = Not Available

| | LS-16T |
|-------------------------------------------|--------|
| Supervisor™ II Deluxe | NA |
| Electro-Mechanical Controls | ● |
| Direct Coupled | ● |
| Highly Efficient Air/Fluid Separation—MSS | ● |
| Spin-On Fiberglass Fluid Filter | NA |
| Built-In Aftercooler | ● |
| Heavy Duty Intake Filter | ● |
| Sullube™ 8000 Hour Compressor Fluid | ● |
| SRF 1/4000™ Compressor Fluid | NA |
| Bearing Fluid Reservoir—BFR | ● |
| Wye Delta Starter | NA |
| Food Grade Compressor Fluid | NA |

| | LS-16T |
|----------------------------------------|--------|
| Solid State Starter | ○ |
| Full Voltage Starter | ● |
| TEFC Premium Efficiency Motor | ○ |
| Emerald 5-Year Health Assurance | NA |
| 24KT™ (10-Year Air End Warranty) | NA |
| Sound Attenuating Enclosure | ○ |
| Sullair's Versatile Control System—VCS | NA |
| Cold Weather Package | ○ |
| Water-cooled | ○ |
| Energy Efficiency System (EES) | NA |



Member



Sullair Corporation is a member of the Compressed Air Challenge, sponsored by the United States Department of Energy.



Sullair is committed to a program of continuous improvement. Features and specifications may change without notice. Consult your Sullair representative or authorized Sullair distributor.

www.sullair.com

SULLAIR CORPORATION, 3700 E. Michigan Blvd., Michigan City, IN 46360 Telephone: 1-800-367-6737

LS05E 0708R1 Specifications subject to change without notice. © Copyright 2007 Sullair Corporation. All rights reserved.



Printed on recycled paper.