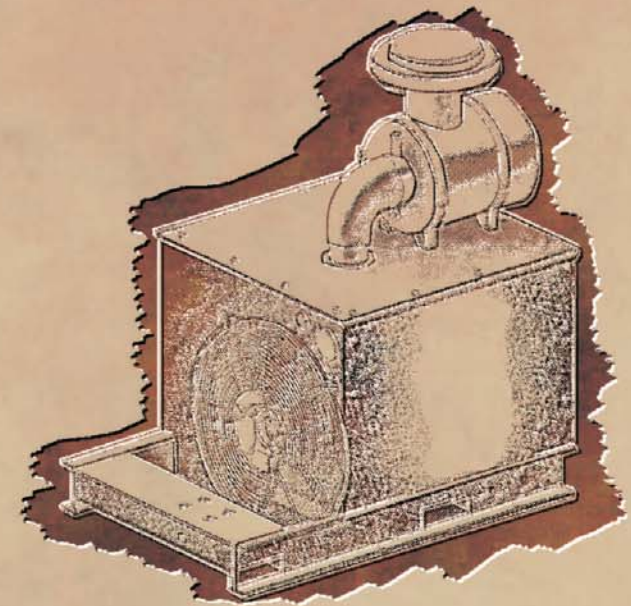




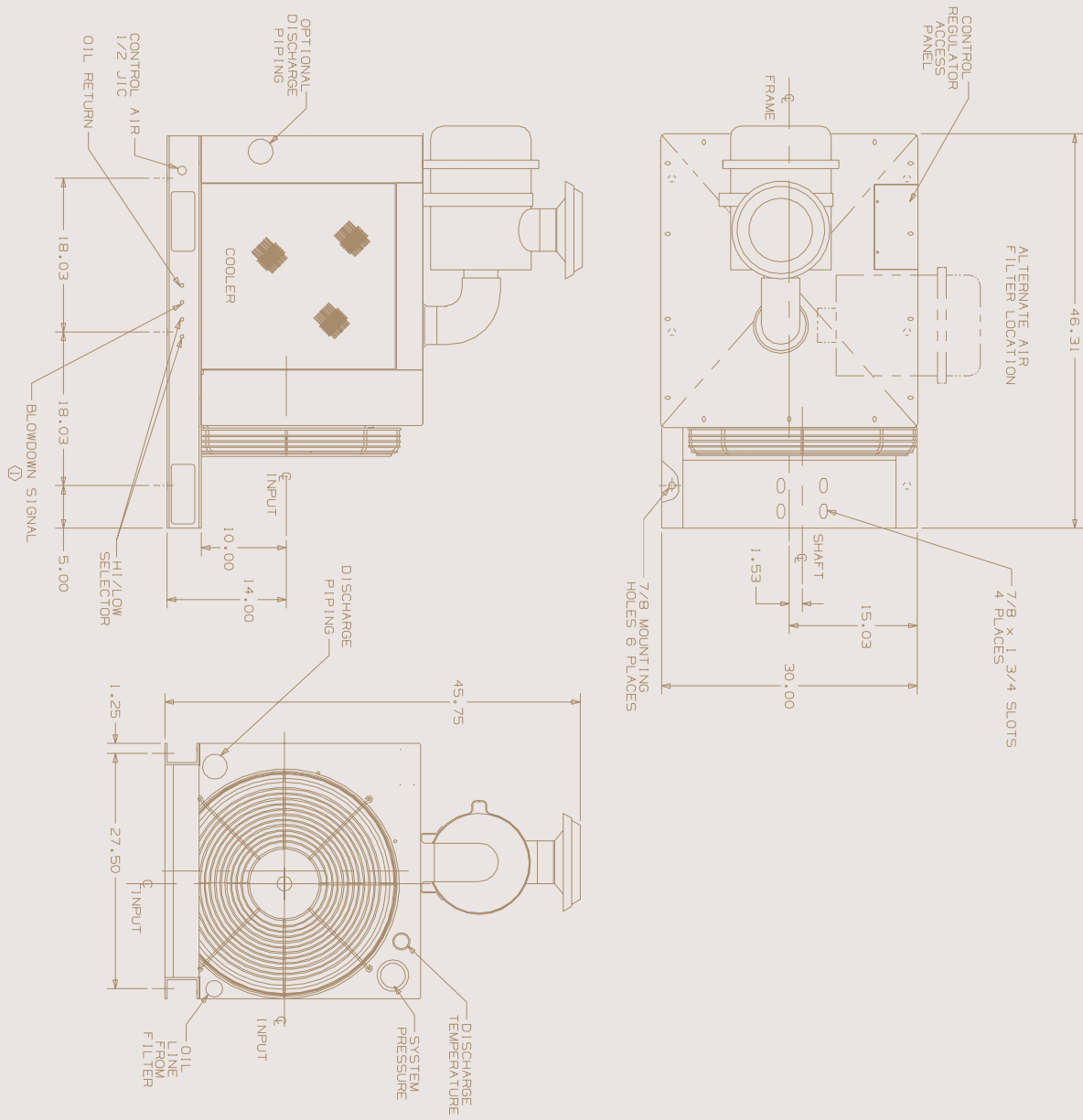
SULLAIR®



MODULAR PACKAGE

310 CFM

100 - 200 PSI





Drill Compressor Module Horse Power Requirements*

MODEL SIZE	PSIG (BAR)	ICM / BHP AT 2500 RPM
310	100 (6.9)	307 / 82
310	200 (13.8)	296 / 111

*The ratings in this table should be used to compare the different Sullair compressors to each other. Actual performance may vary depending on site conditions.

When you need...

...up to 200 psig (13.8 bar) air, the 310 (8.8 m³/min) Sullair drill compressor modules can't be beat. The only major moving parts in a Sullair rotary screw compressor unit are the two rotors. Such mechanical simplicity gives the compressor unit great dependability and long life. Our two-year warranty covers loss of capacity caused by wear, as well as defects in material and workmanship, for confidence that ensures they will be a match for any drilling application.

Custom Engineering

A Sullair Drill Compressor Module Package centers around the Sullair rotary screw compressor within a cooling package system that is mounted on a rugged base frame, and enclosed within a sturdy sheet metal housing. These packages are available in a broad range of capacities designed as a compact system that provides positive warm-up and protection from the environment.

Drive Methods

Standard models can be either direct driven through a coupling, driveline with standard Spicer joints, or hydraulic motor (not provided) to allow the customer varying options to meet any demand.

Reliability

All machines feature built-in monitor capabilities that assure correct pressure and temperature levels, in addition to activating customer shutdown or warning system in case of excessive temperatures or abnormally low operating pressure.

Specifications

COMPRESSOR:	310 CFM (12 Series)
Type:	Rotary Screw
Maximum Operating Pressure:	Up to 200 psi (13.8 bar)
Cooling:	Pressurized Fluid

Installation Assistance

Of course installation requirements will vary... that's why our specialized service is available. You benefit from our years of experience with drill compressor units which enables us to assist you in designing an installation for each specific application.

SULLAIR CORPORATION
 3700 East Michigan Boulevard
 Michigan City, Indiana 46360 U.S.A
www.sullair.com
 Telephone: 1-800-SULLAIR (U.S.A. only)
 Fax: 219-874-1273

**CUSTOMER CARE
 for PARTS and SERVICE**
 1-888-SULLAIR (785-5247)
 219-874-1835

