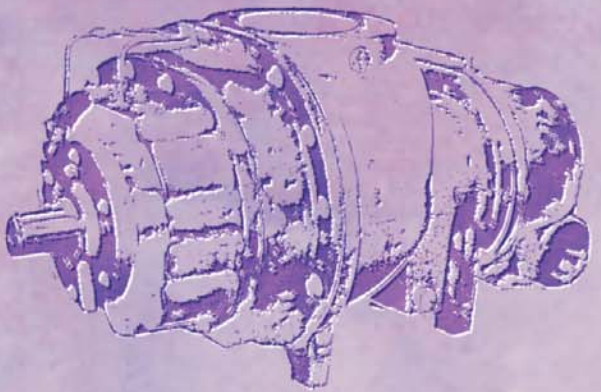




# SULLAIR®

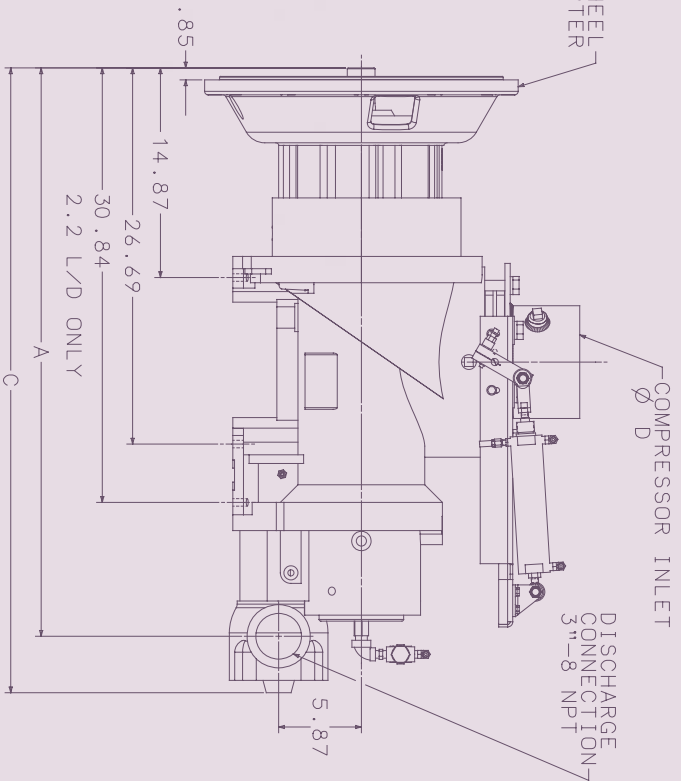
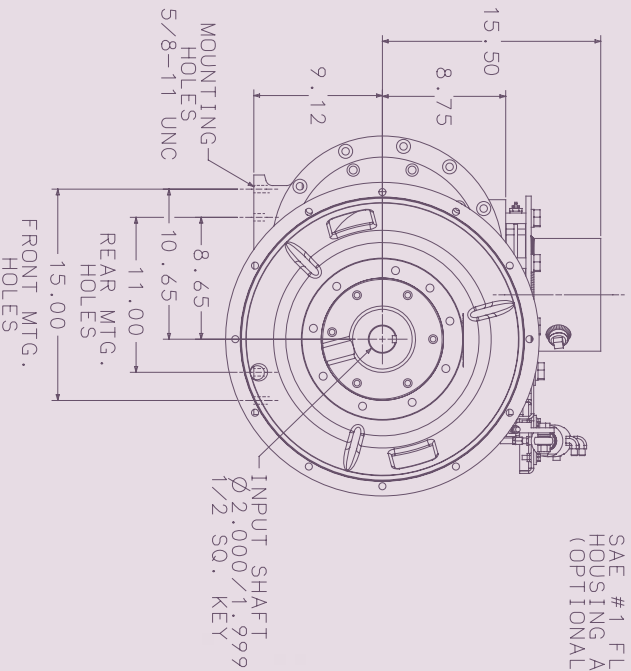
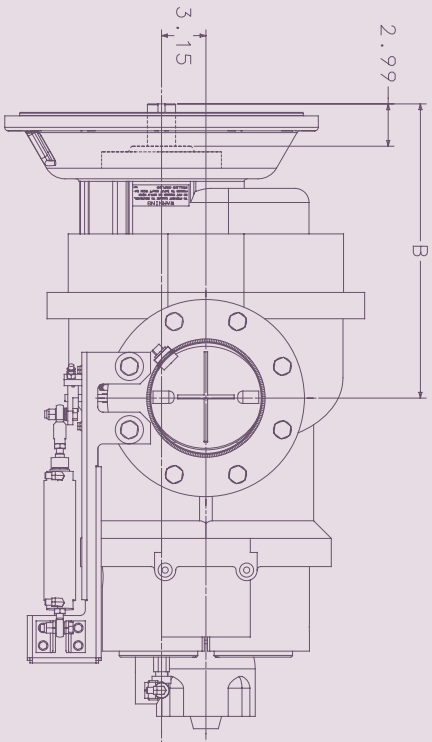


## DRILL COMPRESSOR

### 750 - 1050 CFM

### Up to 200 PSI

DIM	1.7 L/D	2.2 L/D
A	36.31	40.33
B	18.87	20.87
C	40.32	44.34
D	7.00	8.00





## Drill Compressor Horse Power Requirements\*

MODEL	PSIG (BAR)	ICM / BHP 1.7 L/D		ICM / BHP 2.2 L/D	
		AT 1800 RPM	AT 2100 RPM	AT 1800 RPM	AT 2100 RPM
750	100 (6.9)	786 / 169	780 / 168	N / A	N / A
750	175 (12.1)	767 / 221	761 / 222	N / A	N / A
900	100 (6.9)	919 / 205	920 / 205	958 / 209	922 / 200
900	175 (12.1)	901 / 266	902 / 267	933 / 271	89 / 261
1050	100 (6.9)	N / A	N / A	1100 / 242	1120 / 247
1050	175 (12.1)	N / A	N / A	1075 / 313	1095 / 320

\*The ratings in this table should be used to compare the different Sullair compressors to each other. Actual performance may vary depending on site conditions and package design.

### When you need...

...up to 200 psig (13.8 bar) air, the 750 (21.2 m<sup>3</sup>/min) to 1050 cfm (29.7 m<sup>3</sup>/min) Sullair drill compressors can't be beat. Their rugged, single-stage rotary screw design ensures they will be a match for any drilling application.

### Custom Engineering

Sullair Drill Compressors offer custom design and engineering services that give customers the most effective solution for their compressor applications. Careful review of specifications lets us determine whether they'll fit the application requirements we've developed from our years of experience. And Sullair drill compressor systems can be used with virtually any power source.

### Rotary Screw Reliability

The only major moving parts in a Sullair rotary screw compressor unit are the two rotors. Such mechanical simplicity gives the compressor unit great dependability and long life. Our two-year warranty covers loss of capacity caused by wear, as well as defects in material and workmanship.

### Installation Assistance

Of course installation requirements will vary... that's why our specialized service is available. You benefit from our years of experience with drill compressor units which enables us to assist you in designing an installation for each specific application.

## Specifications

**COMPRESSOR:** 750 - 1050 CFM  
(20 Series Single-Stage)

**Type:** Rotary Screw

**Maximum Operating Pressure:** 200 psi (13.8 bar)

**Cooling:** Pressurized Fluid

**SULLAIR CORPORATION**  
3700 East Michigan Boulevard  
Michigan City, Indiana 46360 U.S.A  
[www.sullair.com](http://www.sullair.com)  
Telephone: 1-800-SULLAIR (U.S.A. only)  
Fax: 219-874-1273

**CUSTOMER CARE**  
**for PARTS and SERVICE**  
1-888-SULLAIR (785-5247)  
219-874-1835

